

Solfège

Arno Vree
najaar 2020
© Eigenwijs, Arnhem

Ritmische Bouwstenen



Bach

Bach



Mo

-

zart

Mo

-

zart



Men

-

dels

-

sohn

Men

-

dels

-

sohn



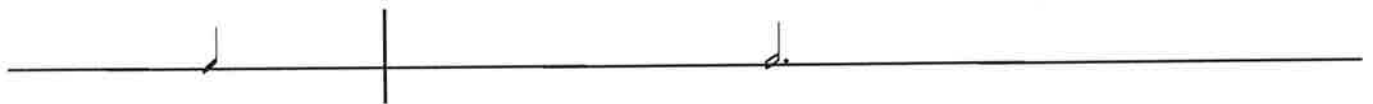
Beet

-

ho

-

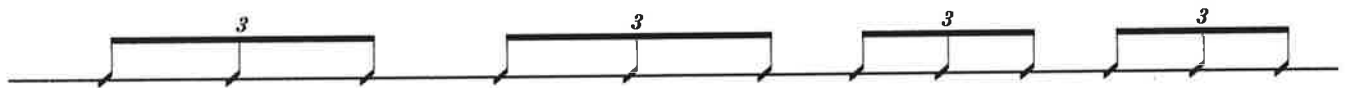
ven



Saint

-

Saëns



Bo

-

ro

-

din

Bo

-

ro

-

din

Sme

-

ta

-

na

Sme

-

ta

-

na



Vi

-

val

-

di

Vi

-

val

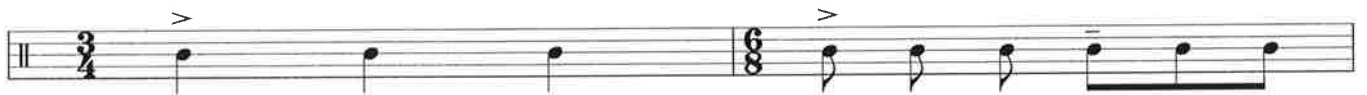
-

di

Maatsoorten



Mars



Wals

Wals (langzaam)



Polonaise



Sciciliano (Pastorale)



Common time

Cut time

Oude muziek



Longa = 2 keer zo lang als:

Brevis = 2 keer zo lang als:

Semi – Brevis

Maatsoorten

regelmatig enkelvoudig binair 2/4, 2/2, 2/8

regelmatig enkelvoudig ternair 3/4, 3/8, 3/16

regelmatig samengesteld binair (2+2) 4/4, 4/2, 4/8 (3+3) 6/8, 6/16

regelmatig samengesteld ternair (2+2+2) 3/2 (3+3+3) 9/8

onregelmatig samengesteld binair (2+3) 5/4, 5/8, (3+2) 5/8

onregelmatig samengesteld ternair (3+2+2) 7/8, 7/16, (2+2+3) 7/8 7/16, (3+3+2) 8/8

onregelmatig samengesteld quaternair (2+2+2+3) 9/8, (3+2+2+3) 10/8, enz.

Intervallen

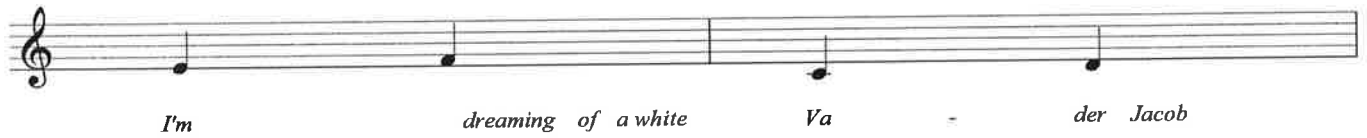
stijgend

Secunde

klein

Secunde

groot



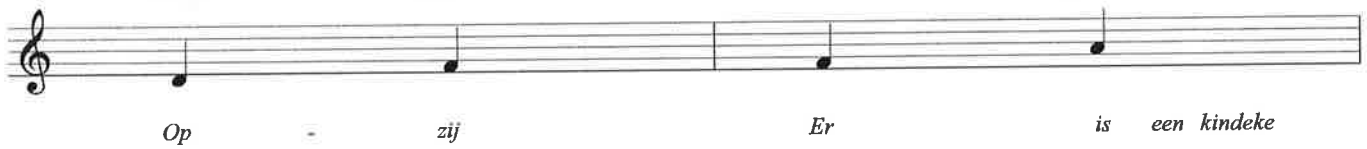
I'm dreaming of a white Va der Jacob

Terts

klein

Terts

groot



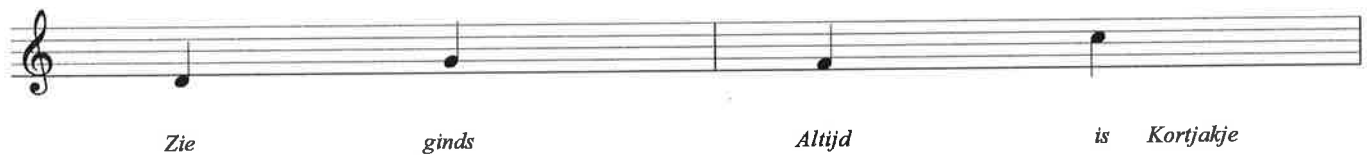
Op zij Er is een kindeke

Kwart

rein

Kwint

rein



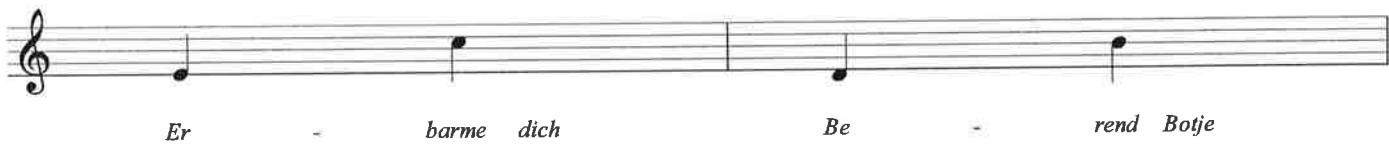
Zie ginds Altijd is Kortjakje

Sext

klein

Sext

groot

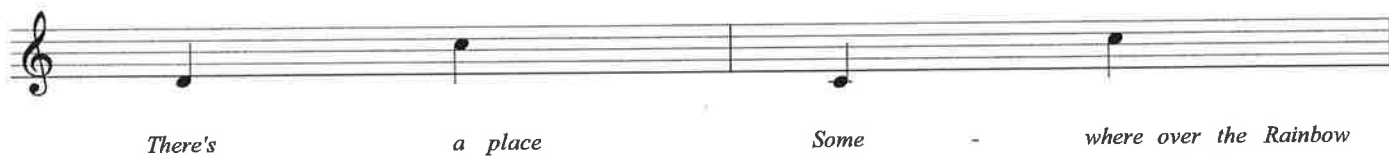


Er barme dich Be rend Botje

Septiem

klein

Octaaf



There's a place Some where over the Rainbow

Intervallen

dalend

Secunde **klein** **Secunde** **groot**

Für *Elise* *Yester* - *day*

Detailed description: A single musical staff in treble clef. It is divided into four measures. The first measure contains a quarter note on G4. The second measure contains a quarter note on F#4. The third measure contains a quarter note on E4. The fourth measure contains a quarter note on D4. The intervals between notes are labeled above the staff: 'Secunde' between G and F#, 'klein' between F# and E, 'Secunde' between E and D, and 'groot' between D and the previous measure's end.

Terts **klein** **Terts** **groot**

Hey *Jude* *2nd* *Waltz*

Detailed description: A single musical staff in treble clef. It is divided into four measures. The first measure contains a quarter note on G4. The second measure contains a quarter note on F#4. The third measure contains a quarter note on E4. The fourth measure contains a quarter note on D4. The intervals between notes are labeled above the staff: 'Terts' between G and F#, 'klein' between F# and E, 'Terts' between E and D, and 'groot' between D and the previous measure's end.

Kwart **rein** **Kwint** **rein**

Eine *kleine* *Nachtmusik* *Flint* - *stones*

Detailed description: A single musical staff in treble clef. It is divided into four measures. The first measure contains a quarter note on G4. The second measure contains a quarter note on E4. The third measure contains a quarter note on C4. The fourth measure contains a quarter note on G3. The intervals between notes are labeled above the staff: 'Kwart' between G and E, 'rein' between E and C, 'Kwint' between C and G, and 'rein' between G and the previous measure's end.

